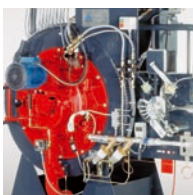
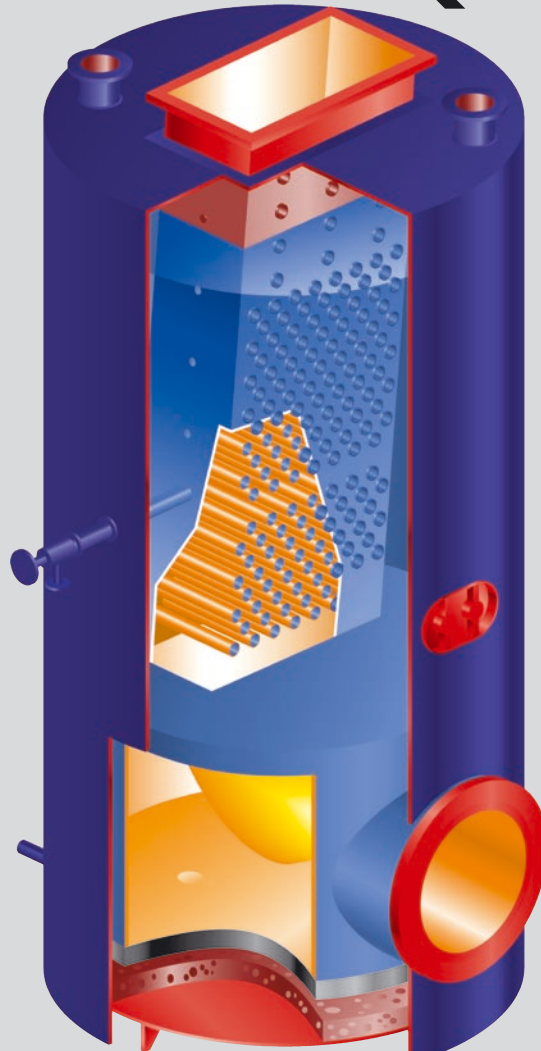


Oil-fired steam boiler
for diesel oil, heavy fuel oil or sludge/waste oil

AQ-10/12W



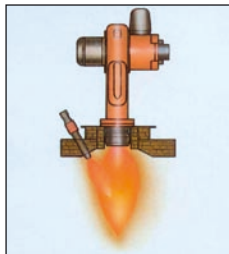
The AQ-10/12W boiler is based on our well-known AQ-12 oil-fired, water tube design, however provided with an enlarged combustion chamber and a stationary, automatic sootblower.

The AQ-10/12W produces saturated steam by burning diesel oil, fuel oil or sludge oil. The burner can be supplemented with a waste oil lance.

Capacity range: 0.6-6.3 t/h
10 bar(g) design pressure

Description

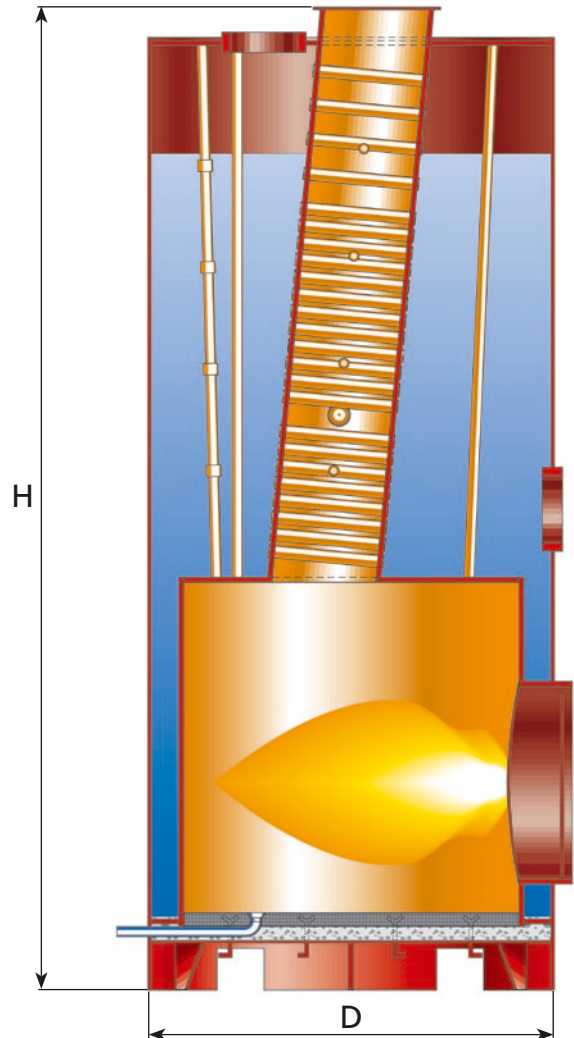
The AQ-10/12W boiler is our AQ-12 water tube boiler type provided with an enlarged combustion chamber, a burner of the rotary cup type, and a stationary automatic soot blower. It can also be equipped with a pressure atomizing burner in connection with a waste oil lance. This type of boiler is capable of producing saturated steam and burns diesel oil, fuel oil and sludge oil.



Waste oil and sludge burning lance.
The lance atomizes the waste oil or sludge at a rate of up to 250 kg/h and injects the atomized oil into the flame of the main burner where it is burned together with the normal heavy fuel/diesel oil.

Design features

- Designed for solving sludge/waste oil problems on board vessels
- Vertical cylindrical boiler with bare water tubes
- Compact unit for burning sludge and poor quality fuel oil
- Provided with a stationary soot blower cleaning system
- Based on well-proven design
- Side-fired design, with rotary cup burner



STANDARD PRODUCT RANGE

Capacity, weight and dimensions

Steam capacity kg/h	Design pressure bar (g)	Height H ^{1) 2)} mm	Diameter D mm	Steam space m ³	Water space m ³	Install weight ^{*)} kg
1,250	10	3,210	1,500	0.50	2.80	8,300
1,600	10	3,685	1,700	0.65	2.50	10,200
2,000	10	3,950	1,900	0.95	4.90	12,800
2,500	10	4,140	2,000	1.05	5.65	14,550
3,150	10	4,660	2,000	1.25	6.25	16,450
4,000	10	5,140	2,200	1.60	8.95	21,950
5,000	10	5,740	2,200	1.90	9.50	24,200
6,300	10	5,960	2,400	2.45	10.95	28,150

*) Weight incl. fittings, burner, insulation, refractory and water.
1) The boiler height is increased if the plant comprises an exhaust gas boiler
2) The boiler height is increased if classification is to be GL, USSR or PRS.